

Measured Load Conditions

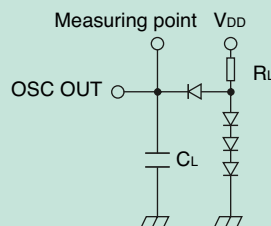


Figure 1
Load corresponding to TTL output

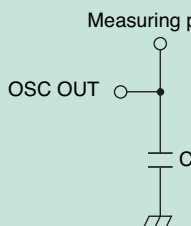


Figure 2
Load corresponding to C-MOS output

1TTL = 5LSTTL

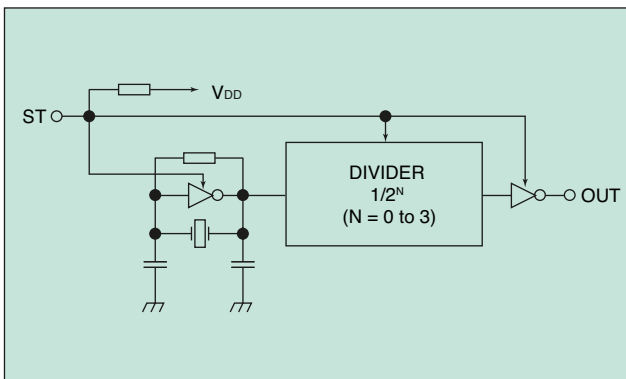
TTL	C _L	R _L
1	15pF	4kΩ
2	15pF	2kΩ
5	15pF	800Ω
10	15pF	400Ω

Note: C_L includes the capacitance of the measurement system.

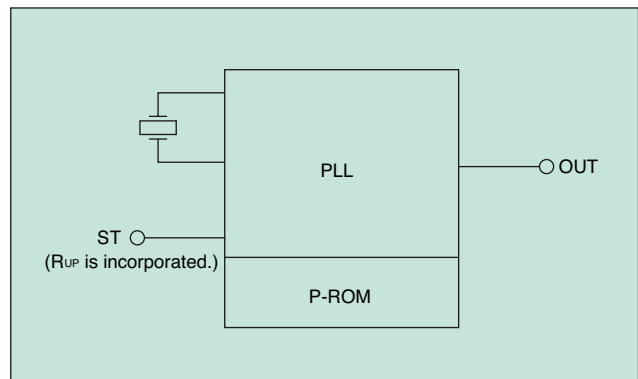
Circuit Diagrams

Examples of a crystal oscillator circuit diagram

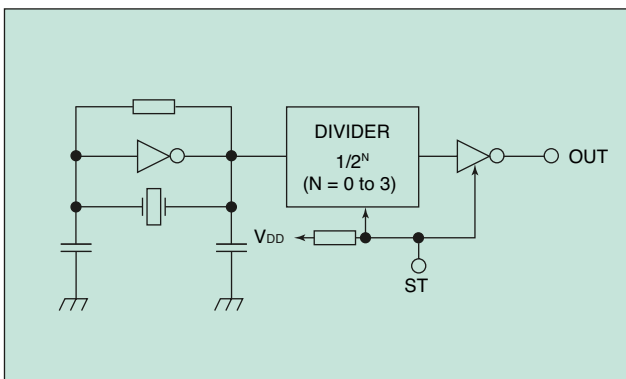
(i) 2560TK/2725T/2725Q/2725Z/NZ2520SB



(iii) 2775Y/2775W/2785V/2795Y/2795W/2795V



(ii) 2560NK/2570NK



(iv) 2765E

